

# THE FLATWHEEL

The Official Monthly Publication of the Central Florida  
Railway Historical Society, Inc.



## May 2017

### May 2017 Meeting

Monday, May 8<sup>th</sup> at 7:00 PM  
Central Florida RR Museum  
101 S. Boyd St., Winter Garden, FL  
**Program:** Operating a Diesel Locomotive  
at Golden Oaks Mining Co.  
**By:** Jarrod Reynolds  
**Refreshments:** Dan & Janet Crusie

### June 2017 Meeting

Monday, June 12<sup>th</sup> at 7:00 PM  
Central Florida RR Museum  
101 S. Boyd St., Winter Garden, FL  
**Program:** RPO Postmarks & Operations  
**By:** Tom Lera  
**Refreshments:** Mike Ryan

## Central Florida RR Museum Host Duty Schedule May 2017

DAY	DATE	HOURS	MUSEUM HOST
Saturday	5/6/17	1 P.M. – 5 P.M.	Dan & Janet Crusie
Sunday	5/7/17	1 P.M. – 5 P.M.	Phil Baker
Saturday	5/13/17	1 P.M. – 5 P.M.	Phil Piet
Sunday	5/14/17	1 P.M. – 5 P.M.	Closed—Mothers' Day
Saturday	5/20/17	1 P.M. – 5 P.M.	Ginger Honetor
Sunday	5/21/17	1 P.M. – 5 P.M.	Sharon Lamb
Saturday	5/27/17	1 P.M. – 5 P.M.	Irv Lipscomb
Sunday	5/28/17	1 P.M. – 5 P.M.	Closed - Memorial Day
Saturday	N/A	1 P.M. – 5 P.M.	N/A
Sunday	N/A	1 P.M. – 5 P.M.	N/A

## May 2017 Museum Work Session

**Saturday, May 20, 2017  
8:30 AM to 3:30 PM**

**Please come out and help  
with the many chores that  
need to be done!!!!**

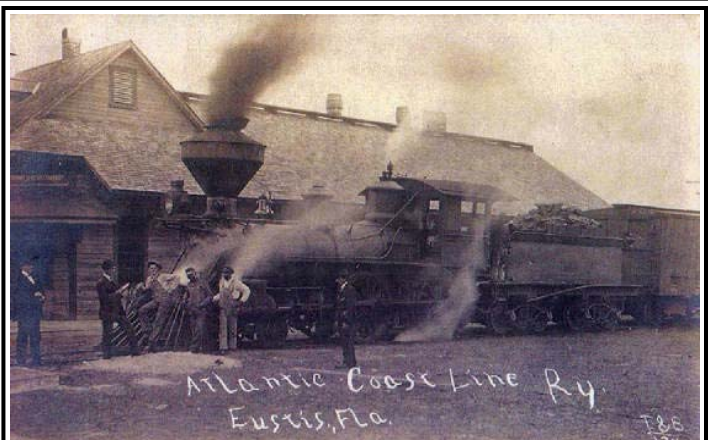
### Please Note:

The CFRHS Board of Directors  
Meeting Scheduled for Monday,  
May 1<sup>st</sup>, has been cancelled.

### May Birthdays

Laurie Dettman 5/15  
Lorenzo Calloway 5/21  
Roger Wilson 5/24  
Al Langley 5/30

**2017 Dues Are Now Due  
Please Remit As Soon  
As Possible**



Thanks to Society Member Irv Lipscomb for This Photo

# This Is The Way It Was

This monthly photo column by Ken Murdock features railroad scenes of the past, a look back into railroading's history.



This is ACL's Perry depot where their famous *Southland* made its first Florida stop on its run from Chicago and the Midwest to Florida's West Coast. The Perry stop was mainly to serve the nearby winter resort at Hampton Springs. Once the Perry Cut-off was completed in 1927, this new route bypassed Jacksonville, saving 92 miles, and made the *Southland* the fastest train from the Midwest to Florida's West Coast. Perry was known as the Gateway to Florida's West Coast. *William Money Penny photo, L.A. Bailey collection*



The southbound *Southland*, train 33, is accelerating as it leaves Perry several hours late, which afforded this rare opportunity to photograph it in Perry on this cool March morning in 1946. Engine 1405, class J-1, was one of five former Delaware Lackawanna & Western 4-8-2 locomotives purchased by the ACL, and were used almost exclusively on the *Southland* between Albany, Georgia to Tampa. They were all scrapped on 1951 and 1952. *Russell Tedder collection*



It's October 21, 1945 and the south bound *Southland*, train 33 with engine 1403, a 4-8-2, was captured making a water stop in Dunnellon. The consist was all heavyweight cars with an RPO behind the tender and three baggage/express cars following. This once popular train succumbed to the automobile and air travel and made its last run on November 29, 1957. The Perry cut-off tracks began to be removed in 1990. *William Husa photo, L.A. Bailey collection*

## April 2017 Museum Report

By Ken Murdock, Museum Curator

We had 5 Wednesday workdays in March which made up for our having only 3 in April. Our first one in April was on the 5<sup>th</sup> and those participating were Al Sharp, Phil Cross, Irv Lipscomb, Jerry and Ginger Honetor and me. The main emphasis was moving items from the old storage area in the Roper Building to the new Work Shop & Storage area. I also finished several finished carpentry items in the Library. We also picked up five used showcases from an antique shop in Tildenville with Jerry's truck and brought them to the Roper Building. The new Work Shop & Storage room is getting very full! Then Phil's daughter and son-in-law donated a very nice glass showcase which we now use behind the host's desk as part of our gift shop. Check it out!

Our second Wednesday workday was on April 19<sup>th</sup>, with Al Sharp, Phil Cross, Irv Lipscomb, Jerry and Ginger Honetor and me participating. We continued moving items out of the old storage area in the Roper Building and into our new Work Shop and Library plus we threw away many items no longer needed. This has been a major job with a lot of heavy lifting. Phil's son-in-law found three more vertical glass showcases at Disney and we bought all of them for \$60. That was a real bargain!

Our monthly Saturday museum workday came later this month on April 22<sup>nd</sup>, due to Winter Garden's Spring Garden Festival falling on the Saturday when we usually have one. Those participating included Phil Cross, Al Sharp, Joe Lehmann, Jarrod Reynolds, Allen Quinn, Jerry and Ginger Honetor and your curator. Phil and Allen cleaned up around the outside, picked up the new showcases at Phil's house and then repaired the front screen door before coming inside to help us move more items into the new Work Shop. At the end of the day we were very close to having the old storage space vacated so that construction can begin our new Meeting Room. Jarrod and I also went under the buildings to run telephone and cat5 computer lines to the new Library. Joe then moved Jerry's computer/server into the new Library and relocated the router. Jerry is now working on inventory in the new Library! I finished installing the library book shelves and they are ready for the books to be moved from the old Library. Ginger cleaned showcases and polished silver in the museum and hosted in the afternoon.

We rapped up the month with a Wednesday workday on April 26<sup>th</sup>, with Jerry and Ginger Honetor, Al Sharp, Phil Cross, Irv Lipscomb and me participating. We finished moving items out of storage and started demolition of the partition separating the air conditioned space from what was our storage room. Once it is removed, we will begin into phase 2, finishing the new meeting room. Ginger was there faithfully polishing silver and hosting in the afternoon. It was another very productive month. Thanks to all who participated on workdays or hosting. We can't do it without you!!

## Upcoming Events

**May 8, 2017** — Monthly Meeting of the Central Florida Railway Historical Society at 7:00 PM in the Central Florida Railroad Museum, 101 South Boyd Street.

**June 3-4, 2017** — Tampa, FL — 17<sup>th</sup> Tampa Train Show & Sale, Florida State Fairgrounds Special Events Center, 9 AM to 5 PM Saturday, 10 AM to 4 PM Sunday. Contact: Charles Miller, 386-736-8185, [rrshows@aol.com](mailto:rrshows@aol.com). Website: <http://www.gserr.com>.

**June 12, 2017** — Monthly Meeting of the Central Florida Railway Historical Society at 7:00 PM in the Central Florida Railroad Museum, 101 South Boyd Street.

**July 8, 2017** — Deland, FL — 60<sup>th</sup> Florida Rail Fair, Volusia County Fairgrounds, 3150 East New York Avenue, 9 am – 4 pm and 10 am– 3:30 pm. Contact: Charles Miller, 386-736-8185, [rrshows@aol.com](mailto:rrshows@aol.com). Website: <http://www.gserr.com>.

**July 10, 2017** — Monthly Meeting of the Central Florida Railway Historical Society at 7:00 PM in the Central Florida Railroad Museum, 101 South Boyd Street.

**August 14, 2017** — Monthly Meeting of the Central Florida Railway Historical Society at 7:00 PM in the Central Florida Railroad Museum, 101 South Boyd Street.

**September 11, 2017** — Monthly Meeting of the Central Florida Railway Historical Society at 7:00 PM in the Central Florida Railroad Museum, 101 South Boyd Street.

**October 9, 2017** — Monthly Meeting of the Central Florida Railway Historical Society at 7:00 PM in the Central Florida Railroad Museum, 101 South Boyd Street.

**November 13, 2017** — Monthly Meeting of the Central Florida Railway Historical Society at 7:00 PM in the Central Florida Railroad Museum, 101 South Boyd Street.

**December 11, 2017** — Monthly Meeting of the Central Florida Railway Historical Society at 7:00 PM in the Central Florida Railroad Museum, 101 South Boyd Street.

\*\*\*\*\*

### **Central Florida Railway Historical Society, Inc. Combined Board & Regular Meeting Minutes Central Florida RR Museum April 10, 2017 7:00 PM**

1. Call to Order – Jerry Honetor
  - Board members present: Jerry Honetor, Phil Piet, Irv Lipscomb, Ken Murdock, David Rhea, Roger Wilson, Joe Lehmann, Jarrod Reynolds and Phil Cross.
  - 7 members and 2 guests present.
2. Meeting Prayer and Pledge of Allegiance – David Rhea
3. Recognition of Visitors – Jerry Honetor
  - Sherry Hurt and Bill Sullivan were introduced.
4. Recognition of Members/Friends Concerns – Jerry Honetor
  - Dwight Stoffel has improved some and his wife is doing better as well.
  - Bill Dusenbury's Aunt passed last week.
5. Museum Host Schedule for May 2017 – Irv Lipscomb
6. Tonight's Program: **Nevada Northern Railway: Ore to Copper by Jarrod Reynolds**
7. Tonight's Refreshments Provided By: **Les Westlake & Sherry Hurt**

8. Approval of the March 13, 2017 Combined Board & Regular Meeting Minutes – Jerry Honetor

- A motion by Phil Piet second by Irv Lipscomb to accept the minutes, the motion carried unanimously.

9. March 2017 Treasurer's Report – David Rhea & Roger Wilson

- David Rhea reported the Society is solvent.
- David also requested the city to put bollards in front of the HVAC next to the Roper Building so cars will not hit it when parking.
- West Orange Photo and Digital will be printing 2,500 brochures for the museum.
- David requested the WGHF move the box for the scavenger hunt off the ramp to the platform.

10. Vice President of Membership & Programs Report – Phil Piet

- Membership Report
  - \* Phil Piet sent follow up emails and regular mail for the members that have not renewed to date.
  - \* Currently 76 Members. 63 members have renewed.
  - \* In about two weeks, Phil Piet will begin to contact delinquent members by telephone.
- Field Trips Suggested/Planned for 2017
  - \* Gold Coast Railroad Museum in Miami, FL — Phil Piet has come up with a plan for the trip about \$400 per person for October 27<sup>th</sup> through October 29<sup>th</sup>.
  - \* Irv Lipscomb reported the Enterprise Train Museum on Thursday April 20<sup>th</sup> is having a former Amtrak employee talking about working at Amtrak. 7 members are organizing a car pool to attend.
- Programs & Refreshments Hosts for 2017:
  - \* All program slots for 2017 have been filled.
  - \* Refreshments Host for October 2017 is needed.

11. E-Bay Store Report – Ross Marvin – No report.

12. Museum Curator Report – Ken Murdock

- CFRR Museum Report – **1,316** visitors during February and **2,081** visitors for 2017 to date. **316.75** hours donated by the membership during February and **737.75** hours donated by the membership for 2017 to date.
- Library Update
  - \* Ken spoke to someone from the school board to potentially find a home for the duplicate books.
  - \* Jerry Reports they are slowly moving into the Roper Building.
- Technology Update - no report.
- Recent Acquisitions & Donations
  - \* Ken reported they purchased 5 show cases from antique dealer going out of business.
  - \* Phil Cross's daughter donated another showcase which will be part of the gift shop.
  - \* Jerry reported they received 8 bags of train magazines.
- Expansion Plans/Status for the Central Florida Railroad Museum
  - \* Two new rooms (library and shop) are finished except for painting of trim and we are moving items in.
- Fundraising Efforts to Support the Museum Expansion
  - \* Phil Cross submitted a fund raising plan to Cindy from WGHF.
- The Next Museum Work Session: The next work session is scheduled for **April 22<sup>nd</sup>**, beginning at 8:30 AM. The following work session will be **May 20<sup>th</sup> at 8:30 AM**.
- Phil Cross mentioned that there are things we should move to a storage unit so we have room to finish the expansion. Phil will check into sizes and prices of units.



13. President's Report – Jerry Honetor

- Winter Garden Heritage Foundation Board of Directors Activities for January 2017
  - \* Finalized plans for participation in the Spring Fever in the Garden event, scheduled for April 8<sup>th</sup> and 9<sup>th</sup>.
  - \* Selecting a contractor for the construction of the Courtyard between the History Center and the Heritage Museum.
  - \* Working on additional funding through a Capital Campaign for the construction of the Courtyard and the establishment of a maintenance fund for the Foundation.
  - \* Continued planning for the May 2017 Annual Golf Tournament.

14. CFRHS Facebook Page – Jarrod Reynolds

- Report for the month: 21 page views, 0 page likes, 96 people reached and 72 post engagements.

15. Items from the Board of Directors

- Phil Piet reported we have the National Model Railroad Association Convention brochures in the museum.
- Roger Wilson reported on a book called "The Race Underground".

16. Items from the Membership

- Mike Ryan reported there is a tourist train coming back to Tavares, Mount Dora, Eustis, Orlando and Winter Garden.

17. Meeting Adjournment

- A motion by Phil Piet second by Jarrod Reynolds to adjourn the meeting. The motion carried.

+++++

## Central Florida Railroad Museum (Before the Recent Painting by the City of Winter Garden)



Photo Courtesy of Society Member Irv Lipscomb

## 2017 CFRHS Membership Statistics

Society Members	24
Society Century Members	16
Ward Britt	
Phil Cross	
Ann Cross	
Bill Dusenbury	
Charles Hanus, Sr.	
Chuck Hanus	
Linda Hanus	
Jerry Honetor	
Clarence Hurt	
Joe Lehmann, Jr.	
Irv Lipscomb	
Ross Marvin	
Ken Murdock	
Phil Piet	
Al Sharp	
Jim Shoemaker	
Society Friends	20
Society Family Members	15
Society Student Members	0
<b>Total Members</b>	<b>75</b>

**May 2017 Museum  
Work Session  
Saturday, May 20, 2017  
8:30 AM to 3:30 PM**

**Please come out and help  
with the many chores that  
need to be done!!!!**

**The Flatwheel** is the official monthly publication of the Central Florida Railway Historical Society. Opinions and views expressed in this publication are those of the editor and contributors and do not necessarily reflect those of the members, officers or directors of the Society.

Material for the Flatwheel (including exchange newsletters) should be sent to the editor via e-mail at:

[editor@cfrhs.org](mailto:editor@cfrhs.org) .

**Please Note:** Material from The Flatwheel may be reprinted in other publications provided credit is given as to the source.

**The Central Florida Railroad Museum** is located at 101 South Boyd Street, Winter Garden, FL, 34787 (downtown Winter Garden, immediately north of the water tower).

The Museum is open daily from 1:00 PM to 5:00 PM (excluding selected holidays) or by special arrangements. Large groups are encouraged to contact the Museum at 407-656-0559 to arrange for their tour in advance.

The Central Florida Railroad Museum is operated under a cooperative agreement between the City of Winter Garden, the Winter Garden Heritage Foundation and the Central Florida Railway Historical Society, Inc..

**The Central Florida Railway Historical Society, Inc.** meets on the 2<sup>nd</sup> Monday of each month at 7:00 PM at the **Central Florida Railroad Museum**. The Museum is located at 101 South Boyd Street in downtown Winter Garden immediately north of the water tower. Guests and visitors are welcome and encouraged to attend.

All correspondence and other materials for the Society should be mailed to:

Central Florida Railway Historical Society, Inc.

PO Box 770567

Winter Garden, FL 34777-0567

Or e-mailed to the Society at: [info@cfrhs.org](mailto:info@cfrhs.org)

Web page: [www.cfrhs.org](http://www.cfrhs.org)

**Mission:** The mission of the Central Florida Railway Historical Society, Inc. is: Promoting railway heritage and preservation and educating members and the public about rail transportation, its history and impact, with a focus on Central Florida.

**Purpose:** The purpose for which this Society is formed and the business or objects to be carried on and promoted by it are mainly historical, educational and not-for-profit. The more particular objects are:

- Preserve the historical materials of rail transportation of all kinds and issue publications relative to the subject.
- Acquire by donation, purchase, lease or otherwise, real or personal property, and to maintain, sell, lease, deed or otherwise manage in a manner appropriate for the Central Florida Railroad Museum and the above mentioned purposes.
- Plan and run a series of programs and events for Society members' education and participation.
- Work and support the activities of the Winter Garden Heritage Foundation. Assist in any and all group projects which benefit the goals and activities of the Society and the Winter Garden Heritage Foundation.

President: Jerry Honetor

[president@cfrhs.org](mailto:president@cfrhs.org)

407-957-8788

Vice President - Membership & Programs: Phil Piet

[vpmembership@cfrhs.org](mailto:vpmembership@cfrhs.org)

407-801-4960

Vice President - Education & Public Relations: Irv Lipscomb

[vpeducation@cfrhs.org](mailto:vpeducation@cfrhs.org)

407-895-4749

Secretary: Joe Lehmann, Jr.

[secretary@cfrhs.org](mailto:secretary@cfrhs.org)

856-912-8628

Assistant Secretary: Jarrod Reynolds

[asstsecretary@cfrhs.org](mailto:asstsecretary@cfrhs.org)

407-256-6516

Treasurer: David Rhea

[treasurer@cfrhs.org](mailto:treasurer@cfrhs.org)

407-656-8749

Assistant Treasurer: Roger Wilson

[assttreasurer@cfrhs.org](mailto:assttreasurer@cfrhs.org)

352-314-0881

Museum Curator: Ken Murdock

[curator@cfrhs.org](mailto:curator@cfrhs.org)

407-277-5719

Assistant Museum Curator: Al Sharp

[asstcurator@cfrhs.org](mailto:asstcurator@cfrhs.org)

407-898-4082

Assistant Museum Curator: Jarrod Reynolds

[asstcurator2@cfrhs.org](mailto:asstcurator2@cfrhs.org)

407-256-6516

Historian: Phil Cross

[historian@cfrhs.org](mailto:historian@cfrhs.org)

407-509-4572

Immediate Past President: Bill Dusenbury

[pastpresident@cfrhs.org](mailto:pastpresident@cfrhs.org)

407-509-1521

Flatwheel Editor: Phil Cross

[editor@cfrhs.org](mailto:editor@cfrhs.org)

407-509-4572

Webmaster: Joseph Lehmann, Jr.

[webmaster@cfrhs.org](mailto:webmaster@cfrhs.org)

856-912-8628