

THE FLATWHEEL

The Official Monthly Publication of the Central Florida
Railway Historical Society, Inc.



February 2017

February 2017 Meeting

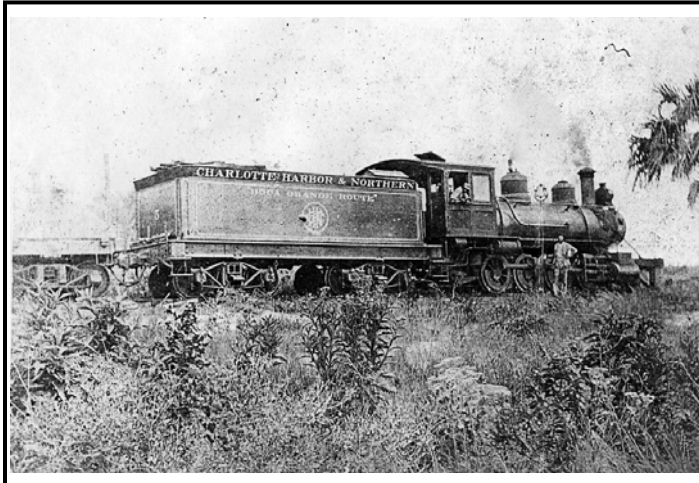
Monday, February 13th at 7:00 PM
Central Florida RR Museum
101 S. Boyd St., Winter Garden, FL
Program: *Trains Magazine Colorado Rail
Tour 2016 - Part 1*
By: Ken Murdock
Refreshments: Phil Cross

March 2017 Meeting

Monday, March 9th at 7:00 PM
Central Florida RR Museum
101 S. Boyd St., Winter Garden, FL
Program: *Trains Magazine Colorado Rail
Tour 2016 - Part 2*
By: Ken Murdock
Refreshments: Irv Lipscomb

Central Florida RR Museum Host Duty Schedule February 2017

DAY	DATE	HOURS	MUSEUM HOST
Saturday	2/4/17	1 P.M. – 5 P.M.	Phil Piet
Sunday	2/5/17	1 P.M. – 5 P.M.	Mike Kelly
Saturday	2/11/17	1 P.M. – 5 P.M.	Ginger Honetor
Sunday	2/12/17	1 P.M. – 5 P.M.	Clarence Calloway
Saturday	2/18/17	1 P.M. – 5 P.M.	Jarrod Reynolds
Sunday	2/19/17	1 P.M. – 5 P.M.	Phil Baker
Saturday	2/25/17	1 P.M. – 5 P.M.	Irv Lipscomb
Sunday	2/26/17	1 P.M. – 5 P.M.	Phil Piet
Saturday	N/A	1 P.M. – 5 P.M.	N/A
Sunday	N/A	1 P.M. – 5 P.M.	N/A



**2017 Dues Are Now Due
Please Remit As Soon
As Possible**

February 2017 Museum Work Session

**Saturday, February 11, 2017
8:30 AM to 3:30 PM**

**Please come out and help
with the many chores that
need to be done!!!!**

February Birthdays

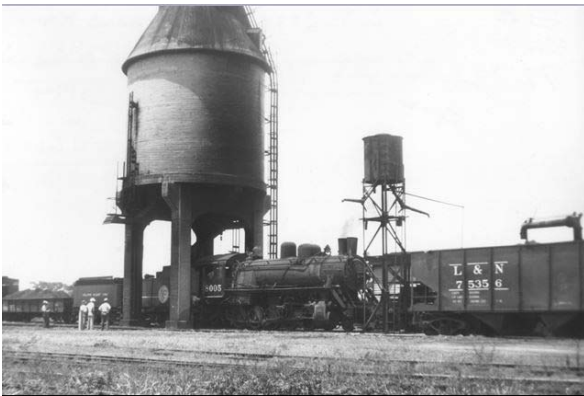
**David Rhea 2/4
Dan Crusie 2/6
Dan Martin 2/20
Diane Hardwich 2/21
Warren Jennison 2/27
Ken Murdock 2/27**

This Is The Way It Was

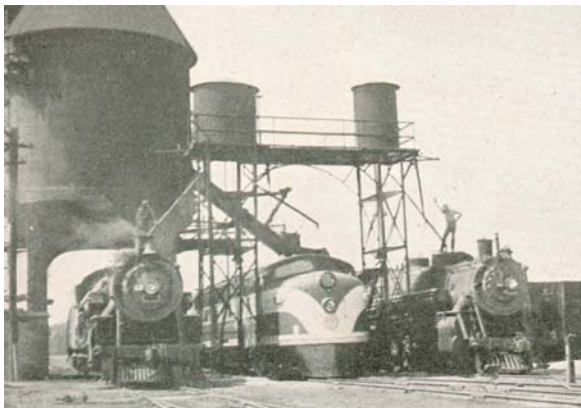
This monthly photo column by Ken Murdock features railroad scenes of the past, a look back into railroading's history.



Though coaling towers didn't exist in the Orlando area, they could be found in places like Lakeland, Trilby, St. Pete, Tampa, Jacksonville and Wilcox to name a few. This double track tower was at Wilcox, installed when the Perry Cut-Off was completed in 1929, to service ACL's *Southland* that ran from Chicago and the Midwest to Tampa, Sarasota and St. Pete. A similar tower was at Trilby where the *Southland's* Tampa & St. Pete sections were split. – *Lederer's Facebook collection*



This concrete coaling tower was in ACL's yard in St. Petersburg in this 1945 scene. Also, visible in this photo is the sanding tower and the water column. Being at the end of the line, all ACL trains north bound for Jacksonville, Chicago or New York for had to be serviced here while being prepared for their return trips. This facility could service three locomotives simultaneously. – *Ken Murdock's collection*



This is a 1945 scene of ACL's coaling tower and sanding facility in Jacksonville that could coal two locomotives and sand three simultaneously. The ACL built most of their coaling towers in Florida of concrete. Sand had to be dried in the sand house before being conveyed to the elevated sand tanks. Wet sand would clog the delivery pipes on the locomotives. ACL demolished most of their towers in the early to mid-1950s. – *ACL News, CFRHS collection*

January 2017 Museum Report

By Ken Murdock, Museum Curator

Wow! Where did 2016 go! It just flew by and here we are a month into the new year. Construction progress is moving along very well in the Roper Building. We hit the ground running with our Wednesday workdays with Al Sharp, Irv Lipscomb, Jerry and Ginger Honeter and I participating. Irv worked on inventory and Ginger cleaned showcases and polished silver while the rest of us worked primarily on the drywall work in the Roper Building.

We also had an extra workday on Friday, the 13th, with Phil Cross, Jarrod Reynolds, Les Westlake, Jerry Honeter and you curator participating. Friday was so successful that we held another on the 20th. Jerry Honeter, Phil Cross and I participated. With Wednesdays and these added Fridays, we completed hanging and taping and mudding the sheetrock and are now sanding and applying the second coat of mud and will soon be ready for trim carpentry and painting. David Rhea and Bill Walters are continuing to work at home on restoring the Fairbanks depot freight cart that was recently donated, and they are making good progress.

A good friend of mine, Bill Sturhke, came by the museum, at my request, while we were working on the 13th, to look at what needs to be done to enclose the breezeway. Bill is a structural engineer and has offered to donate his engineering services as required for the breezeway enclosure so that we can get a building permit for that phase of the work. This is a major savings for our society! The architect for R. C. Stevens gave us a quote of \$13,000 for this work! Bill only asked for a letter acknowledging his donation for tax purposes. I have been working on the architectural, A/C and electrical drawings for this phase at home. Bill will provide the engineering details and sign and seal the drawings for permitting.

We had our monthly museum workday on January 14th, with Phil Cross, Al Sharp, Joe Lehmann, Jerry and Ginger Honeter and your curator participating. Several took care of the never ending housekeeping chores of picking up trash on the outside and blowing off the walks. Then they moved inside to vacuum, mop, clean glass on showcases, clean the rest room and empty trash cans. Joe took care of a few computer issues. The remainder of us concentrated on our construction project, mudding and taping sheetrock joints and screw heads in the Roper Building. This work is progressing very well and all are invited to check it out sometime when you are there.

Ross Marvin was presented the annual Glad Hand Award for outstanding service to our organization for 2016. Ross has done an outstanding job of fund raising for us thru the eBay store that he set up and operates. Ross was also named the Railroad Museum's Volunteer of the Year by the Winter Garden Heritage Foundation and was recognized at their Volunteer Appreciation event on January 29th in Heller Hall. Thank you Ross!!! These awards of recognition are well deserved and we appreciate your efforts very, very much!!!

The year started off with several very nice donations. One was a very rare Adams & Westlake switch stand lantern with the latest patent date of 1902. It is unlike any in our collection due to its shape and being made for a fork mounting to the switch stand. It is complete with colored lenses, pot and wick raiser. It was donated by Alondra Potts of DeLand. Another item is a framed 4-4-0 steam locomotive made entirely from sheet brass and watch parts. One of the locomotive's driving wheels is a quartz clock. It was donated by a neighbor of Lloyd and Sylvia Brown and they came by and delivered it to David Rhea.

Continued in the Middle of Page 5

Upcoming Events

February 11, 2017 — Jacksonville, FL — 39th Jacksonville Rail Fair, Railroadiana and Model Train Show, 9:00 to 5:00. Prime Osborn Convention Center, 1000 Water Street (former Jacksonville Terminal). Details: Charlie Miller, (703) 536-2954, rrshows@aol.com. Website: <http://www.gserr.com>.

February 13, 2017 — Monthly Meeting of the Central Florida Railway Historical Society at 7:00 PM in the Central Florida Railroad Museum, 101 South Boyd Street.

March 13, 2017 — Monthly Meeting of the Central Florida Railway Historical Society at 7:00 PM in the Central Florida Railroad Museum, 101 South Boyd Street.

April 7-9, 2017 — Annual runs of the NARCOA motorcars on the Florida Central and Florida Northern Railroads. No other info available at this time. This will be updated as info becomes available.

April 8, 2017 — Deland, FL — 59th Florida Rail Fair, Volusia County Fairgrounds, 3150 East New York Avenue, 9 am – 4 pm and 10 am– 3:30 pm. Contact: Charles Miller, 386-736-8185, rrshows@aol.com. Website: <http://www.gserr.com>.

April 8, 2017 — Hickory, NC — 15th Annual North Carolina Railroad Expo, Hickory Metro Center, 9 AM to 3 PM, for more info contact www.tarheelpress.com/Trainshow.

April 10, 2017 — Monthly Meeting of the Central Florida Railway Historical Society at 7:00 PM in the Central Florida Railroad Museum, 101 South Boyd Street.

May 8, 2017 — Monthly Meeting of the Central Florida Railway Historical Society at 7:00 PM in the Central Florida Railroad Museum, 101 South Boyd Street.

June 3-4, 2017 — Tampa, FL — 17th Tampa Train Show & Sale, Florida State Fairgrounds Special Events Center, 9 AM to 5 PM Saturday, 10 AM to 4 PM Sunday. Contact: Charles Miller, 386-736-8185, rrshows@aol.com. Website: <http://www.gserr.com>.

June 12, 2017 — Monthly Meeting of the Central Florida Railway Historical Society at 7:00 PM in the Central Florida Railroad Museum, 101 South Boyd Street.

July 8, 2017 — Deland, FL — 60th Florida Rail Fair, Volusia County Fairgrounds, 3150 East New York Avenue, 9 am – 4 pm and 10 am– 3:30 pm. Contact: Charles Miller, 386-736-8185, rrshows@aol.com. Website: <http://www.gserr.com>.

August 14, 2017 — Monthly Meeting of the Central Florida Railway Historical Society at 7:00 PM in the Central Florida Railroad Museum, 101 South Boyd Street.

September 11, 2017 — Monthly Meeting of the Central Florida Railway Historical Society at 7:00 PM in the Central Florida Railroad Museum, 101 South Boyd Street.

October 9, 2017 — Monthly Meeting of the Central Florida Railway Historical Society at 7:00 PM in the Central Florida Railroad Museum, 101 South Boyd Street.

November 13, 2017 — Monthly Meeting of the Central Florida Railway Historical Society at 7:00 PM in the Central Florida Railroad Museum, 101 South Boyd Street.

December 11, 2017 — Monthly Meeting of the Central Florida Railway Historical Society at 7:00 PM in the Central Florida Railroad Museum, 101 South Boyd Street.

Central Florida Railway Historical Society, Inc. Combined Board & Regular Meeting Agenda Central Florida RR Museum January 9, 2017 7:00 PM

- Call to Order – Jerry Honetor: Meeting called to order at 7:00PM
- Board members present: Jerry Honetor, Phil Cross, Phil Piet, Irv Lipscomb, Ken Murdock, David Rhea, Roger Wilson, and Jarrod Reynolds.
- Members Present: Unknown
- Meeting Prayer and Pledge of Allegiance – David Rhea
- Recognition of Visitors – Jerry Honetor
 - * Numerous visitors present.
- Recognition of Members/Friends Concerns – Jerry Honetor
 - * Jarrod Reynolds reports that his mother is doing a lot better.
 - * Roger Wilson expresses gratitude to the society for the thoughts and prayers.
 - * Jerry and Diane Hardwich: Diane is doing a lot better.
- Museum Host Schedule for February 2017 – Irv Lipscomb
- Installation of Officers for 2017 Not Sworn in at the December 12, 2016 Meeting (Phil Piet, Roger Wilson and Bill Dusenbury) – Al Sharp
 - * Phil Piet and Roger Wilson have been officially sworn in as an officer. Bill Dusenbury not present at meeting.
- Tonight's Program: **Shooting Video of Trains in the YouTube Age by Danny Harmon**
- Tonight's Refreshments Provided By: **Phil Piet**
- Approval of the December 12, 2016 Combined Board & Regular Meeting Minutes – Jerry Honetor
 - * Jarrod Reynolds made motion, Dave Rhea seconded. Motion of approval passed unanimously.
- December 2016 Treasurer's Report – David Rhea & Roger Wilson
 - * David Rhea transferred \$5000 from expansion to checking account to compensate upcoming expenses.
 - * Budget committee met and discussed 2017 budget.
- Approval of the Proposed Budget for 2017 – Jerry Honetor, David Rhea & Roger Wilson
 - * Phil Cross made motion, Phil Piet second. Motion of approval passed unanimously.
- Vice President of Membership & Programs Report – Phil Piet
 - * Membership Report
 - ◆ Currently 72 Members. Seven members have renewed for 2017 so far.
 - * Field Trips Suggested/Planned for 2017
 - ◆ Gold Coast Railroad Museum in Miami, FL (In progress).

- ◆ Jarrod Reynolds suggested Spring Folkston Railwatch April 1, 2016
- * Programs & Refreshments Hosts for 2017:
 - ◆ Neil Bagaus presenting "Starting Up The Hosier State" in July.
 - ◆ Refreshments Hosts for May 2017, June 2017 and September 2017 through November 2017 are needed.
 - ◆ Dan and Janet Crusie took May 2017 Refreshment slot.
 - ◆ David Rhea takes August 2017 refreshment slot.
- E-Bay Store Report – Ross Marvin
 - * No Report – Ross Marvin was not at the meeting.
- Museum Curator Report – Ken Murdock
 - * CFRR Museum Report – **610** visitors during November and **7,725** visitors for 2016 to date. **316.25** hours donated by the membership during November and **3,571.00** hours donated by the membership for 2016 to date.
 - * Library Update: Possible 30 box of books donation coming in courtesy of Dan & Janet Crusie.
 - * Technology Update: No report- Joe Lehmann was not present at the meeting.
 - * Recent Acquisitions & Donations:
 - ◆ David Rhea reports of new acquisitions: very early Adlake switch lamp approx. age over 100 years old valued \$500 donated by Rhonda Potts. Lloyd & Sylvia Brown donated a framed steam locomotive made out of clock parts and has a functioning clock.
 - * Expansion Plans/Status for the Central Florida Railroad Museum: Work is progressing in the Roper Building, will proceed to get drawings of breezeway enclosure.
 - * Fundraising Efforts to Support the Museum Expansion: Director of Winter Garden Heritage Foundation has agreed to support us for 2017 fundraising for the expansion.
 - * The Next Museum Work Session: The next work session is scheduled for **February 11th, 2017**, beginning at 8:30 AM.
- President's Report – Jerry Honetor
 - * Winter Garden Heritage Foundation Board of Directors Activities for December 2016
 - ◆ Selecting a contractor for the construction of the Courtyard between the History Center and the Heritage Museum.
 - ◆ Working on additional funding through a Capital Campaign for the construction of the Courtyard and the establishment of a maintenance fund for the Foundation.
 - ◆ Began planning for the May 2017 Annual Golf Tournament.
- CFRHS Facebook Page – Jarrod Reynolds
 - * Page Views: 31
 - * Page Likes: 4
 - * People Reach: 252
 - * Post Engagement: 214
- Items from the Board of Directors:
 - * Jarrod Reynolds announced that the Orange Blossom Cannonball is going to be shutting down at the end of the month.
 - * Ken Murdock reported that the FECRY Historical Society is affiliated with the NRHS, and board suggested Ken pursue for more info.
 - * Ken Murdock and Irv Lipscomb announced the WGHF volunteer appreciation on Sunday January 29th and hope that many of our members will attend.
- Items from the Membership: None
- Meeting Adjournment: Motion of adjournment by Roger Wilson, David Rhea seconded. Motion passed at 9:15PM.

+++++

CENTRAL FLORIDA RAILWAY HISTORICAL SOCIETY, INC.

ACTIVITIES HISTORY

2016

- **Jerry Honetor – President**
- Society meetings held at the Central Florida RR Museum.
- Society continued as Partner in Education with Lakeville Elementary School.
- Society membership for the year totaled 74 Century, Regular, Family and Friend members.
- The Central Florida Railroad Museum had a record attendance of 8,381 visitors.
- Society members donated a total of 3,885.75 hours for the operation and maintenance of the Central Florida Railroad Museum.
- Monthly and weekly work sessions were held at the Central Florida Railroad Museum.
- The Central Florida Railroad Museum is operated under a cooperative agreement between the City of Winter Garden, the Winter Garden Heritage Foundation, Inc. and the Central Florida Railway Historical Society, Inc.

Apr. 9-10 The Central Florida Railroad Museum was open for the 16th Annual Bloom & Grow Garden Society *Spring Fever in the Garden* event in downtown Winter Garden. The Museum was open eight hours on Saturday and five hours on Sunday. Society members Irv Lipscomb, Phil Piet and Phil Cross manned the Museum on Saturday; Society

members Jerry and Ginger Honetor and Phil Cross manned the Museum on Sunday. Mike Huffman and Mike Zehr of the Orange Lego Users Group (Orange LUG) set up and manned the large Lego display of downtown Winter Garden in the Museum's Meeting Room both days. Florida Chapter of the Morse Telegraphy Club members Warren McFarland and Clyde Francis manned a telegraph display in the Museum's Meeting Room on Saturday. Warren McFarland is also a member of the Central Florida Railway Historical Society, Inc. The Museum, Lego display and the telegraphy display were a big hit with the attendees.

Apr. 15-17 The North American Rail Car Operators Association (NARCOA) sponsored their annual motor car excursions on the Florida Central RR (Friday, April 15th and Saturday, April 16th) and Florida Northern RR (Sunday, April 17th). Friday's excursion was roundtrip from Eustis to Umatilla and return (with lunch at the Mason Jar) and Eustis to Mt. Dora and return (dinner in Mt. Dora). There were 15 motor cars and 2 hi-railers. Saturday's excursion was roundtrip from Eustis to Winter Garden and return. There were 16 motor cars and 2 hi-railers. Attendees enjoyed lunch in downtown Winter Garden and some visited the CFRR Museum. Sunday's excursion was from downtown Ocala south to Candler and return and then Ocala west on the former SSO&G track and return. There 8 motor cars. Society Member Bill Dusenbury participated in the weekend's activities. Society Member Les Westlake flagged crossings for the group on Friday and Saturday.

Aug. 13 The Central Florida Railroad Museum hosted the annual meeting of the Florida Garden Railway Society. Society Member Ross Marvin coordinated the event and welcomed the group to the Museum.

Sept. 28 Society members officially began the expansion of the Central Florida Railroad Museum into the Roper Building. Framing work for the library and shop were the first orders of work.

Oct. 8-9 Society members manned the Museum on the afternoon of the 8th and the 9th in conjunction with the Winter Garden Heritage Foundation's 11th Annual Music Fest. The Museum was open 1 PM to 5 PM both days. Society Members Dan & Janet Crusie manned the Museum on Saturday and Society Member Phil Piet manned the Museum on Sunday.

Oct. 22 Society members Jim Crescitelli and Phil Cross manned the Winter Garden Heritage Foundation's booth at the 19th Oakland Heritage Festival. The booth featured photos of Oakland's rich town and railroad history.

Nov. 19 On Saturday, November 19th, Central Florida Railway Historical Society Members Add Austin, Roger Wilson, Jerry & Ginger Honetor, Patrick Smith, and Phil Piet travelled to the Florida Railroad Museum (FRRM) in Parrish, Florida, for a delightful field trip. The members rendezvoused at the FRRM in time for the 10:30 excursion on a beautiful fall day. It was perfect weather for a ride in the open-air gondola at the front end of the train. The motive power was FRRM #8330 (EMD GP-11). The unit was originally built in the 1950s for Union Pacific as a cableless 'booster' or B-unit, and was later given a cab and made able to operate on its own. It worked for the Illinois Central for quite some time, which is where it first received its current road number. Most recently, it worked on the former Inland Lakes Railway in Mt. Dora before being sold to the FRRM. The group's day of railfanning ended with a late lunch at a delightful Italian restaurant in Bradenton.

+++++

January 2017 Museum Report

Continued from Page 2

Al Sharp donated a 60-year-old Lionel plastic train depot in mint condition in the original box, two hard-to-find lamp shades for Pullman brass wall lamps, a custom-made G gauge wood maintenance-of-way building and a pack of never opened Christmas cards with trains on them. The depot and M-O-W building can be sold on eBay. The Christmas cards can be sold in our gift shop and the lamp shades will go into our spare parts department for future needs. We also received another 30-box collection of railroad books from Kathy Suttkus of Leesburg. They belonged to her late husband, Michael. Ironically, this is the second 30-box book collection that we have received in the last two years!!

2017 is off to a great start and I want to thank all of you who have participated by hosting, helping on workdays or doing projects at home. We couldn't do it without you!!!

+++++



Two
Photos
Of
Work
Progress
In Roper
Building



2017 CFRHS Membership Statistics

Society Members	24
Society Century Members	14
Ward Britt	
Phil Cross	
Ann Cross	
Bill Dusenbury	
Charles Hanus, Sr.	
Chuck Hanus	
Linda Hanus	
Jerry Honetor	
Clarence Hurt	
Irv Lipscomb	
Ross Marvin	
Ken Murdock	
Al Sharp	
Jim Shoemaker	
Society Friends	22
Society Family Members	12
Society Student Members	0
Total Members	72

**February 2017 Museum
Work Session**
Saturday, February 11, 2017
8:30 AM to 3:30 PM
**Please come out and help
with the many chores that
need to be done!!!!**

The Flatwheel is the official monthly publication of the Central Florida Railway Historical Society. Opinions and views expressed in this publication are those of the editor and contributors and do not necessarily reflect those of the members, officers or directors of the Society.

Material for the Flatwheel (including exchange newsletters) should be sent to the editor via e-mail at:

editor@cfrhs.org.

Please Note: Material from The Flatwheel may be reprinted in other publications provided credit is given as to the source.

The Central Florida Railroad Museum is located at 101 South Boyd Street, Winter Garden, FL, 34787 (downtown Winter Garden, immediately north of the water tower).

The Museum is open daily from 1:00 PM to 5:00 PM (excluding selected holidays) or by special arrangements. Large groups are encouraged to contact the Museum at 407-656-0559 to arrange for their tour in advance.

The Central Florida Railroad Museum is operated under a cooperative agreement between the City of Winter Garden, the Winter Garden Heritage Foundation and the Central Florida Railway Historical Society, Inc..

The Central Florida Railway Historical Society, Inc. meets on the 2nd Monday of each month at 7:00 PM at the **Central Florida Railroad Museum**. The Museum is located at 101 South Boyd Street in downtown Winter Garden immediately north of the water tower. Guests and visitors are welcome and encouraged to attend.

All correspondence and other materials for the Society should be mailed to:

Central Florida Railway Historical Society, Inc.

PO Box 770567

Winter Garden, FL 34777-0567

Or e-mailed to the Society at: info@cfrhs.org

Web page: www.cfrhs.org

Mission: The mission of the Central Florida Railway Historical Society, Inc. is: Promoting railway heritage and preservation and educating members and the public about rail transportation, its history and impact, with a focus on Central Florida.

Purpose: The purpose for which this Society is formed and the business or objects to be carried on and promoted by it are mainly historical, educational and not-for-profit. The more particular objects are:

- Preserve the historical materials of rail transportation of all kinds and issue publications relative to the subject.
- Acquire by donation, purchase, lease or otherwise, real or personal property, and to maintain, sell, lease, deed or otherwise manage in a manner appropriate for the Central Florida Railroad Museum and the above mentioned purposes.
- Plan and run a series of programs and events for Society members' education and participation.
- Work and support the activities of the Winter Garden Heritage Foundation. Assist in any and all group projects which benefit the goals and activities of the Society and the Winter Garden Heritage Foundation.

President: Jerry Honetor

president@cfrhs.org 407-957-8788

Vice President - Membership & Programs: Phil Piet

vpmembership@cfrhs.org 407-801-4960

Vice President - Education & Public Relations: Irv Lipscomb

vpeducation@cfrhs.org 407-895-4749

Secretary: Joe Lehmann, Jr.

secretary@cfrhs.org 856-912-8628

Assistant Secretary: Jarrod Reynolds

asstsecretary@cfrhs.org 407-256-6516

Treasurer: David Rhea

treasurer@cfrhs.org 407-656-8749

Assistant Treasurer: Roger Wilson

assttreasurer@cfrhs.org 352-314-0881

Museum Curator: Ken Murdock

curator@cfrhs.org 407-277-5719

Assistant Museum Curator: Al Sharp

asstcurator@cfrhs.org 407-898-4082

Assistant Museum Curator: Jarrod Reynolds

asstcurator2@cfrhs.org 407-256-6516

Historian: Phil Cross

historian@cfrhs.org 407-509-4572

Immediate Past President: Bill Dusenbury

pastpresident@cfrhs.org 407-509-1521

Flatwheel Editor: Phil Cross

editor@cfrhs.org 407-509-4572

Webmaster: Joseph Lehmann, Jr.

webmaster@cfrhs.org 856-912-8628