

THE FLATWHEEL

The Official Monthly Publication of the Central Florida
Railway Historical Society, Inc.



November 2016

November 2016 Meeting

Monday, November 14th at 7:00 PM
Central Florida RR Museum
101 S. Boyd St., Winter Garden, FL
Program: Steam Railroading in Oviedo
By: Ken Murdock
Refreshments: Sharon Lamb

December 2016 Meeting

Monday, December 12th at 7:00 PM
Central Florida RR Museum
101 S. Boyd St., Winter Garden, FL
Program: Street Railways/Railroads
in the State of Florida in the 1800s -1900s
By: Warren Jennison
Refreshments: Jerry & Ginger Honetor

Central Florida RR Museum Host Duty Schedule November 2016

DAY	DATE	HOURS	MUSEUM HOST
Saturday	11/5/16	1 P.M. – 5 P.M.	Jarrod Reynolds
Sunday	11/6/16	1 P.M. – 5 P.M.	Sharon Lamb
Saturday	11/12/16	1 P.M. – 5 P.M.	Ginger Honetor
Sunday	11/13/16	1 P.M. – 5 P.M.	Phil Baker
Saturday	11/19/16	1 P.M. – 5 P.M.	Irv Lipscomb
Sunday	11/20/16	1 P.M. – 5 P.M.	Clarence Hurt
Saturday	11/26/16	1 P.M. – 5 P.M.	Eric Carboneau
Sunday	11/27/16	1 P.M. – 5 P.M.	Phil Piet
Saturday	N/A	1 P.M. – 5 P.M.	N/A
Sunday	N/A	1 P.M. – 5 P.M.	N/A



Society Member Connor Murdock in disguise in his ROTC uniform. Looking good!!!!

November 2016 Museum Work Session

**Saturday, November 12, 2016
8:30 AM to 3:30 PM**

**Please come out and help
with the many chores that
need to be done!!!!**

November Birthdays

**William Walter 11/02
Ward Britt 11/15
Mary Cogswell 11/18
Andy Healy 11/20
Phil Baker 11/22
Phil Piet 11/22
Tery Baker 11/24**

This Is The Way It Was

This monthly photo column by Ken Murdock features railroad scenes of the past, a look back into railroading's history.



Last month we saw a Seaboard System train operating thru Winter Garden. Now we fast forward a few years and find Pinsky's Florida Central Railroad has taken over the tracks from CSX, and their GP35 #207 is kicking up dust on the ex-T&G tracks as its train rolls past our museum, west bound on Tremaine Street. *CFRHS photo*



This next scene finds six covered hoppers on the same train, as it moves west bound on the ex-T&G, street running for a block on Tremaine Street. About two blocks ahead it will swing onto the ex-ACL tracks. There the locomotive will reverse and push its train east bound on Plant Street thru the middle of Winter Garden. The man riding the last car, with his hand held radio, will flag the crossings on Plant Street after his train reverses and is pushed east thru town. *CFRHS photo*



Now the train is on Plant Street with the locomotive pushing it east bound thru the center of Winter Garden. We can see that the West Orange Trail had been built and shares the right-of way with the train. This arrangement would last only a short time until the by-pass track was completed on the east side of town in 1999. Hardly a trace of where trains once ran on Plant Street for 114 years is visible today. *CFRHS photo*

October 2016 Museum Report

By Ken Murdock, Museum Curator

We have continued the month with Wednesday work-days, but the emphasis has changed from inventory work to primarily construction work in the Roper Building. Ginger Honeter has continued her duties of polishing silver and cleaning showcases, then hosting in the afternoons. Irv Lipscomb has continued with the inventory, working in our flat files on maps, calendars, artwork, and posters and on time tables.

Jerry Honeter and I have concentrated on raising stud partitions in the Roper Building. Phil Cross was on vacation on October 5, and also pitched in to help us. We have all of the partitions up for the library and work shop and about a quarter of the new meeting area. We added stud partitions around the building's perimeter, except in the work shop, since most of the perimeter finish was too irregular to install drywall over. We passed a preliminary framing inspection by the Winter Garden Building Department. Our electrician started the electrical rough-in for the first phase on October 26, and will probably be finished by the time that you read this report. We are talking to two A/C contractors and hope to sign a contract with one very soon.

We held our monthly museum workday on October 15, 2016, and had 5 members participating. Those who came out and pitched in were Phil Cross, Les Westlake, Jerry and Ginger Honeter and your curator. We accomplished many tasks including the very necessary housekeeping chores. We also moved many items in the Roper Building where new construction needed to be done and then finished all the wood stud framing for phase one. Construction in the remainder of the new meeting room can't begin until we finish the library and work shop and move our things being stored into those spaces.

Ross Marvin has continued selling donated items on eBay and all of this money is going into the building fund. The last deposit that Ross reported was for \$800! Thank you Ross, for taking on this fund raising effort and doing it so well!! It has been a big help!! This is so important in another way also. Selling these items gets them out of the Roper Building where they are in the way of our construction work.

We had two donations this month. The first was from Mrs. Helen Kinski of Clermont. Her late husband was a Conrail engineer and this was her second donation from his collection. The second was from Sharon Sherman of Winter Garden. She donated some HO scale model train items from her late father's collection.

We had another great month with many things being accomplished. We couldn't do it without the help of all who participated in hosting and work days. A SPECIAL THANKS to each of you who pitched in and helped in some way!

Check out the 3 photos at the bottom of Page 5 that documents progress of the expansion into the Roper Building.

Upcoming Events

November 14, 2016 — Monthly Meeting of the Central Florida Railway Historical Society at 7:00 PM in the Central Florida Railroad Museum, 101 South Boyd Street.

December 12, 2016 — Monthly Meeting of the Central Florida Railway Historical Society at 7:00 PM in the Central Florida Railroad Museum, 101 South Boyd Street.

December 17-18, 2016 — Tampa, FL — 16th Tampa Train Show & Sale, Florida State Fairgrounds Special Events Center, 9 AM to 5 PM Saturday, 10 AM to 4 PM Sunday. Contact: Charles Miller, 386-736-8185, rrshows@aol.com. Website: <http://www.gserr.com>.

January 9, 2017 — Monthly Meeting of the Central Florida Railway Historical Society at 7:00 PM in the Central Florida Railroad Museum, 101 South Boyd Street.

February 13, 2017 — Monthly Meeting of the Central Florida Railway Historical Society at 7:00 PM in the Central Florida Railroad Museum, 101 South Boyd Street.

March 13, 2017 — Monthly Meeting of the Central Florida Railway Historical Society at 7:00 PM in the Central Florida Railroad Museum, 101 South Boyd Street.

April 10, 2017 — Monthly Meeting of the Central Florida Railway Historical Society at 7:00 PM in the Central Florida Railroad Museum, 101 South Boyd Street.

May 8, 2017 — Monthly Meeting of the Central Florida Railway Historical Society at 7:00 PM in the Central Florida Railroad Museum, 101 South Boyd Street.

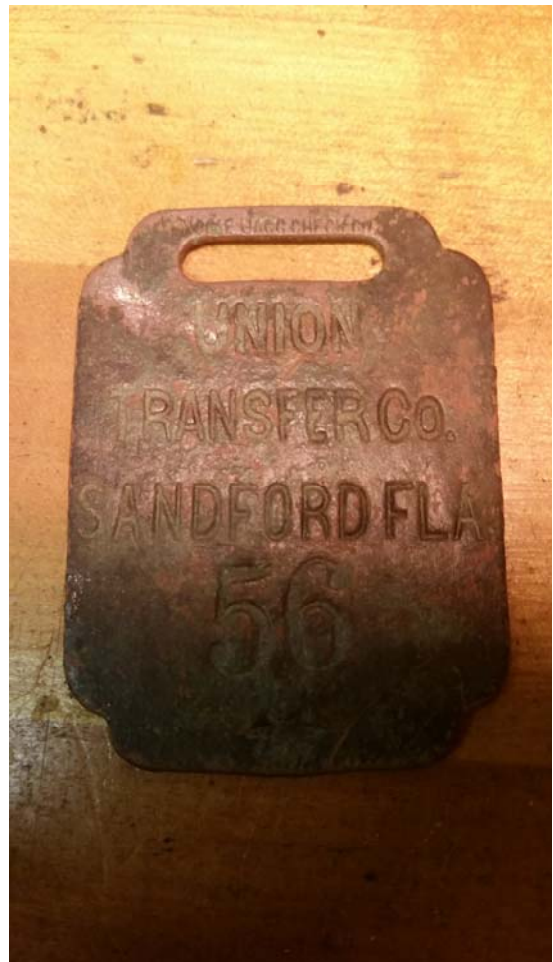
June 12, 2017 — Monthly Meeting of the Central Florida Railway Historical Society at 7:00 PM in the Central Florida Railroad Museum, 101 South Boyd Street.



SALRR Passenger Train at West Palm Beach, FL, on February 9, 1940. Thanks to Society Member Irv Lipscomb for providing this great color photograph.

TWO PHOTOS IN RIGHT COLUMN

Thanks to Society Member Ken Murdock for passing along the two great photos of brass baggage checks from the Union Transfer Company, Sanford, Florida. Mr. Richard Balkham found the tags while metal detecting in downtown Sanford and on the St. Johns River near DeBary. The tags are a rare find. The Union Transfer Company transferred baggage and freight between railroads at union stations in Florida and between the river steamers and the railroads along the major rivers in Florida.



Central Florida Railway Historical Society, Inc.
Combined Board & Regular Meeting Minutes
Central Florida RR Museum
October 10, 2016
7:00 PM

1. Call to Order – Jerry Honetor
 - Meeting called to order at 7:05 pm.
 - The following board members were in attendance: Jerry Honetor, Ken Murdock, Irv Lipscomb, Phil Cross, and Phil Piet. Six members were also present for the meeting.
 - Quorum requirement for conducting business was not met.
2. Meeting Prayer and Pledge of Allegiance – Ken Murdock in David Rhea's absence
3. Recognition of Visitors – Jerry Honetor
 - No visitors present.
4. Recognition of Members/Friends Concerns – Jerry Honetor
 - Jarrod Reynolds reported his parents will be traveling this month.
5. Museum Host Schedule for November 2016 – Irv Lipscomb
 - November work day is set for the 12th. A number of the slots for November were filled by the members present at the meeting.
6. Tonight's Program: **Canadian Railroading by Irv Lipscomb**
7. Tonight's Refreshments Provided By: **Phil Piet**
8. Approval of the September 12, 2016 Combined Board & Regular Meeting Minutes – Jerry Honetor
 - No quorum.
9. September 2016 Treasurer's Report – David Rhea & Roger Wilson
 - Treasurer and Assistant Treasurer not present. September 2016 report not available.
10. Vice President of Membership & Programs Report – Jerry Honetor in Ross Marvin's absence
 - **Membership Report**
 - * Currently 72 Members.
 - **Field Trips Suggested/Planned for 2016**
 - * Gold Coast Railroad Museum in Miami, FL (Suggested).
 - * Field trip to Florida Railroad Museum in Parrish was postponed due to weather. The new date is Nov. 19th.
 - * Other Suggestions??
 - **Programs & Refreshments Hosts for 2016:**
 - * All Programs Slots for 2016, the first 5 months of 2017 and November 2017 have been filled. The remaining 6 slots are open. There were no takers for the open slots.
 - * Refreshments Hosts slots for 2016 have been filled. All slots for 2017 are open, with the exception of December (Taken by Jerry & Ginger Honetor). Phil Piet took January, Irv Lipscomb took February, Phil Cross took March, and Les Westlake took April.
 - **E-Bay Store Report**
 - * No report due to Ross Marvin's absence.
11. Nominating Committee Report – Les Westlake
 - The following slate of candidates was presented.
 - * President: Jerry Honetor
 - * VP – Membership & Programs: Phil Piet
 - * VP – Education & Public Relations: Irv Lipscomb
 - * Secretary: Joe Lehmann
 - * Asst. Secretary: Accepting nominations from the floor.
 - * Treasurer: David Rhea
 - * Asst. Treasurer: Roger Wilson
 - * Museum Curator: Ken Murdock
 - * Historian: Phil Cross
 - * Immediate Past President: Bill Dusenbury
 - NOTE: Phil Piet will not serve as Asst. Secretary if he becomes VP – Membership & Programs.

12. Museum Curator Report – Ken Murdock
 - **CFRR Museum Report** – 440 visitors during August and 6,022 visitors for 2016 to date. 361.25 hours donated by the membership during August and 2,597.50 hours donated by the membership for 2016 to date.
 - **Library Update** - No activity.
 - **Technology Update** - No report due to absence of Joe Lehmann.
 - **Recent Acquisitions & Donations**
 - * Helen Kinski – Railroadiana donations from late husband's collection.
 - * John Reed – ACL crumber and ACL coffee mug.
 - **Expansion plans for the Central Florida Railroad Museum**
 - * Currently undergoing construction. Stud work finishing this weekend.
 - * Electrician hired. Will start work soon.
 - **The Next Museum Work Session:** The next work session is scheduled for **October 15th**, beginning at 8:30 AM.
13. President's Report – Jerry Honetor
 - **Winter Garden Heritage Foundation Board of Directors Activities for September 2016**
 - * Finalizing preparations for the Annual Music Fest Event in downtown Winter Garden on October 7, 8 and 9, 2016.
 - * Finalizing plans for the construction of the Courtyard between the History Center and the Heritage Museum.
 - **Next Quarterly Board Meeting** – Date for the Fourth Quarter 2016 Board Meeting is Monday, November 7, 2016 at 7 PM. Meeting may be cancelled if business can be handled at the November 2016 monthly meeting.
14. CFRHS Facebook Page – Jarrod Reynolds
 - 9/13 – 10/10:
 - * 4 page views.
 - * 8 page likes.
 - * 720 people reached.
 - * 608 post engagements.
15. Central Florida Railroading Update – Bill Dusenbury
 - No update due to Bill's absence.
16. Items from the Board of Directors – None.
17. Items from the Membership
 - Jarrod Reynolds reported on engine sightings in the Orlando area.
18. Meeting Adjournment
 - Motion by Irv Lipscomb, second by Ken Murdock.
 - Motion passed unanimously at 8:30 pm.



2016 CFRHS Membership Statistics

Society Members	26
Society Century Members	14
Ward Britt	
Phil Cross	
Ann Cross	
Bill Dusenbury	
Charles Hanus, Sr.	
Chuck Hanus	
Linda Hanus	
Andy Healy	
Jerry Honetor	
Clarence Hurt	
Ross Marvin	
Ken Murdock	
Al Sharp	
Jim Shoemaker	
Society Friends	20
Society Family Members	13
Society Student Members	0
Total Members	73

**November 2016 Museum
Work Session**
Saturday, November 12, 2016
8:30 AM to 3:30 PM
**Please come out and help
with the many chores that
need to be done!!!!**

The Flatwheel is the official monthly publication of the Central Florida Railway Historical Society. Opinions and views expressed in this publication are those of the editor and contributors and do not necessarily reflect those of the members, officers or directors of the Society.

Material for the Flatwheel (including exchange newsletters) should be sent to the editor via e-mail at:

editor@cfrhs.org.

Please Note: Material from The Flatwheel may be reprinted in other publications provided credit is given as to the source.

The Central Florida Railroad Museum is located at 101 South Boyd Street, Winter Garden, FL, 34787 (downtown Winter Garden, immediately north of the water tower).

The Museum is open daily from 1:00 PM to 5:00 PM (excluding selected holidays) or by special arrangements. Large groups are encouraged to contact the Museum at 407-656-0559 to arrange for their tour in advance.

The Central Florida Railroad Museum is operated under a cooperative agreement between the City of Winter Garden, the Winter Garden Heritage Foundation and the Central Florida Railway Historical Society, Inc..

The Central Florida Railway Historical Society, Inc. meets on the 2nd Monday of each month at 7:00 PM at the **Central Florida Railroad Museum**. The Museum is located at 101 South Boyd Street in downtown Winter Garden immediately north of the water tower. Guests and visitors are welcome and encouraged to attend.

All correspondence and other materials for the Society should be mailed to:

Central Florida Railway Historical Society, Inc.

PO Box 770567

Winter Garden, FL 34777-0567

Or e-mailed to the Society at: info@cfrhs.org

Web page: www.cfrhs.org

Mission: The mission of the Central Florida Railway Historical Society, Inc. is: Promoting railway heritage and preservation and educating members and the public about rail transportation, its history and impact, with a focus on Central Florida.

Purpose: The purpose for which this Society is formed and the business or objects to be carried on and promoted by it are mainly historical, educational and not-for-profit. The more particular objects are:

- Preserve the historical materials of rail transportation of all kinds and issue publications relative to the subject.
- Acquire by donation, purchase, lease or otherwise, real or personal property, and to maintain, sell, lease, deed or otherwise manage in a manner appropriate for the Central Florida Railroad Museum and the above mentioned purposes.
- Plan and run a series of programs and events for Society members' education and participation.
- Work and support the activities of the Winter Garden Heritage Foundation. Assist in any and all group projects which benefit the goals and activities of the Society and the Winter Garden Heritage Foundation.

President: Jerry Honetor

president@cfrhs.org 407-957-8788

Vice President - Membership & Programs: Ross Marvin
vpmembership@cfrhs.org 407-909-9823

Vice President - Education & Public Relations: Irv Lipscomb
vpeducation@cfrhs.org 407-895-4749

Secretary: Joe Lehmann, Jr.
secretary@cfrhs.org 856-912-8628

Assistant Secretary: Phil Piet
asstsecretary@cfrhs.org 407-656-4960

Treasurer: David Rhea
treasurer@cfrhs.org 407-656-8749

Assistant Treasurer: Roger Wilson
assttreasurer@cfrhs.org 352-314-0881

Museum Curator: Ken Murdock
curator@cfrhs.org 407-277-5719

Assistant Museum Curator: Al Sharp
asstcurator@cfrhs.org 407-898-4082

Assistant Museum Curator: Jarrod Reynolds
asstcurator2@cfrhs.org 407-256-6516

Historian: Phil Cross
historian@cfrhs.org 407-509-4572

Immediate Past President: Bill Dusenbury
pastpresident@cfrhs.org 407-509-1521

Flatwheel Editor: Phil Cross
editor@cfrhs.org 407-509-4572

Webmaster: Joseph Lehmann, Jr.
webmaster@cfrhs.org 856-912-8628