

# THE FLATWHEEL

The Official Monthly Publication of the Central Florida  
Railway Historical Society, Inc.



**May 2015**

## May 2015 Meeting

Monday, May 11<sup>th</sup> at 7:00 PM  
Central Florida RR Museum  
101 S. Boyd St., Winter Garden, FL  
**Program:** New England Railroad  
& Folkston Rail Watch 2015  
**By:** Patricia & Patrick Smith  
**Refreshments:** Patricia & Patrick Smith

## June 2015 Meeting

Monday, June 8<sup>th</sup> at 7:00 PM  
Central Florida RR Museum  
101 S. Boyd St., Winter Garden, FL  
**Program:** The Flying Scotsman  
**By:** Jarrod Reynolds  
**Refreshments:** Irv Lipscomb

## Central Florida Railway Historical Society, Inc.

Central Florida RR Museum Host  
Duty Schedule — May 2015

DAY	DATE	HOURS	MUSEUM HOST
Saturday	5/2/2015	1 P.M. – 5 P.M.	Frank Milmore
Sunday	5/3/2015	1 P.M. – 5 P.M.	Phil Piet
Saturday	5/9/2015	1 P.M. – 5 P.M.	Dan & Janet Crusie
Sunday	5/10/2015	1 P.M. – 5 P.M.	CLOSED - MOTHERS' DAY
Saturday	5/16/2015	1 P.M. – 5 P.M.	Irv Lipscomb
Sunday	5/17/2015	1 P.M. – 5 P.M.	Gary Dettman
Saturday	5/23/2015	1 P.M. – 5 P.M.	Jarrod Reynolds
Sunday	5/24/2015	1 P.M. – 5 P.M.	CLOSED - MEMORIAL DAY WSEEKEND
Saturday	5/30/2015	1 P.M. – 5 P.M.	Patrick Smith
Sunday	5/31/2015	1 P.M. – 5 P.M.	Gary Dettman

## May Birthdays

Lloyd Brown 5/2  
Laurie Dettman 5/15  
Sylvia Brown 5/20  
Roger Wilson 5/24



SAL debuts its SILVER METEOR in St. Petersburg, Feb. 6, 1939. Thanks to Society Member Irv Lipscomb for sending in this photo.



FEC 105 Switching in the Augusta, GA area while on lease. Al Langley photo. 4/9/16.

**May 2015  
Museum Work Session  
Saturday, May 30, 2015  
8:30 AM to 3:30 PM  
Please come out and help  
with the many chores  
that need to be done!!!!**

**2015 Society Dues Are Due.  
Please Renew Today If You  
Have Not Done So Already.**

# This Is The Way It Was

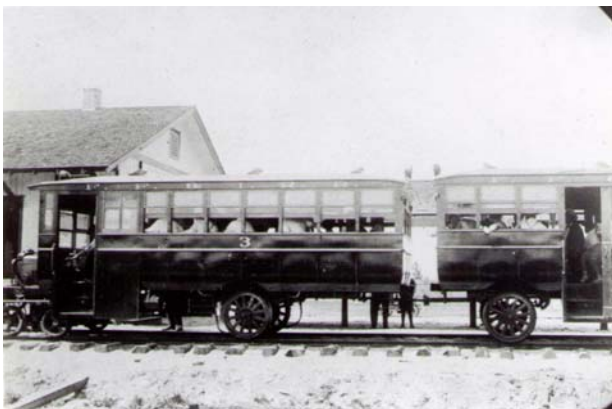
This monthly photo column by Ken Murdock features railroad scenes of the past, a look back into railroading's history.



This month we'll look at several ghost railroads that once operated doodlebugs in Florida. This first doodlebug, operated by the Trans Florida Central, is seen being turned on a homemade turntable at Sebastian. The agricultural RR operated from an FEC connection at Sebastian to Fellsmere, a distance of about 10 miles. It ceased operations in November 1952 due to trucks capturing all of its business.



This 1915 scene finds a back to back pair of rail busses operated by the Ocklawaha Valley RR which operated between Ocala, via Silver Springs, to Palatka, a distance of 54 miles. Was this one of the first pull-pull operations? The OV was a common carrier, though logging was its primary business. It ceased operations in 1922, soon after the Ft. McCoy sawmill closed.



This rail bus and trailer, operated by Florida Farms and Industries, is seen at their Longbranch Station. This farming branch ran from Green Cove Springs, almost due west to the end of the line, a distance of 10 to 12 miles. The FF&I land was purchased by J. C. Penney in 1925 with plans to develop it into a major farming community. The Great Depression greatly reduced Penney's plans and the RR soon ceased operations.

## April 2015 Museum Report

By Ken Murdock, Museum Curator

We have continued with the Wednesday museum workdays during the month of April with Al Sharp, Clem Kruse, Jerry and Ginger Honeter and you curator participating. Jerry has continued with his endless chore of inventorying the continuously arriving library items while Ginger has been cleaning showcases inside and out, vacuuming the meeting room and hosting in the afternoons.

Clem has been organizing and cataloging timetables and dining car menus in special binders that we have acquired. Just as Clem thinks he is about to finish, we uncover more menus or timetables. Our collection of these items is not to be believed!!

Al Sharp and I continued converting showcase fluorescent lighting to LED and I can now happily report that this project is finished. The improved quality of lighting in the showcases is very noticeable. The UV, maintenance and heat problems are no more. All ballast and starters have been removed and the showcases have been rewired with new wiring.

Our monthly museum workday was on Saturday, April 25<sup>th</sup>. I was out of town and Phil Cross handled this session for me. Phil reported that others participating included Al Sharp, Roger Wilson, Allen Quinn, Clem Kruse and Jerry & Ginger Honeter. The big item of the day was the quarterly cleaning of the windows and screens on the museum. That is the quarter of a century quarterly cleaning! Long overdue!

Other items taken care of by those present included repairing the gate on the east end platform, cleaning the glass on the showcases, vacuuming the carpet and mopping the floors in the front rooms and the restroom. These housekeeping chores are very important due to our being open seven day per week and having more than 1000 visitors per month for the first three months of this year.

Clem Kruse continued organizing and cataloging our sizable collection of timetables and menus. Jerry Honeter continued with his never ending task of inventorying our library books and periodicals. We are very fortunate to have Jerry as our librarian because he really enjoys his job and has stuck with it year after year when others may have given up due to the sheer size of the task. Thank you Jerry and thanks to each of you who came out to support our museum in my absences.



## Upcoming Events

**May 4, 2015** — Winter Garden, FL — CFRHS Quarterly BOD Meeting at 7:00 PM in the Central Florida Railroad Museum, 101 South Boyd Street.

**May 11, 2015** — Winter Garden, FL — Monthly Meeting of the Central Florida Railway Historical Society at 7:00 PM in the Central Florida Railroad Museum, 101 South Boyd Street.

**June 8, 2015** — Winter Garden, FL — Monthly Meeting of the Central Florida Railway Historical Society at 7:00 PM in the Central Florida Railroad Museum, 101 South Boyd Street.

**July 11, 2015** — Deland, FL — 52<sup>nd</sup> Florida Rail Fair, Volusia County Fairgrounds, 3150 East New York Avenue, 9 am – 4 pm. Contact: Charles Miller, 386-736-8185, [rrshows@aol.com](mailto:rrshows@aol.com). Website: <http://www.gserr.com>.

**July 13, 2015** — Monthly Meeting of the Central Florida Railway Historical Society at 7:00 PM in the Central Florida Railroad Museum, 101 South Boyd Street.

**August 10, 2015** — Monthly Meeting of the Central Florida Railway Historical Society at 7:00 PM in the Central Florida Railroad Museum, 101 South Boyd Street.

**September 14, 2015** — Monthly Meeting of the Central Florida Railway Historical Society at 7:00 PM in the Central Florida Railroad Museum, 101 South Boyd Street.

**October 3, 2015** — Deland, FL — 53<sup>rd</sup> Florida Rail Fair, Volusia County Fairgrounds, 3150 East New York Avenue, 9 am – 4 pm. Contact: Charles Miller, 386-736-8185, [rrshows@aol.com](mailto:rrshows@aol.com). Website: <http://www.gserr.com>.

**October 12, 2015** — Monthly Meeting of the Central Florida Railway Historical Society at 7:00 PM in the Central Florida Railroad Museum, 101 South Boyd Street.

**November 9, 2015** — Monthly Meeting of the Central Florida Railway Historical Society at 7:00 PM in the Central Florida Railroad Museum, 101 South Boyd Street.

**December 8, 2015** — Monthly Meeting of the Central Florida Railway Historical Society at 7:00 PM in the Central Florida Railroad Museum, 101 South Boyd Street.

**December 19-20, 2015** — Tampa, FL — 14<sup>th</sup> Tampa Train Show & Sale, Florida State Fairgrounds Special Events Center, 9 AM to 5 PM Saturday, 10 AM to 4 PM Sunday. Contact: Charles Miller, 386-736-8185, [rrshows@aol.com](mailto:rrshows@aol.com). Website: <http://www.gserr.com>.

**January 9, 2016** — Clermont, FL — Annual Meeting of the Central Florida Railway Historical Society at the 801 City Grille, beginning with a social hour at 6 PM.

**January 9 & 10, 2016** — Deland, FL — 54<sup>th</sup> Florida Rail Fair, Volusia County Fairgrounds, 3150 East New York Avenue, 9 am – 4 pm and 10 am – 3:30 pm. Contact: Charles Miller, 386-736-8185, [rrshows@aol.com](mailto:rrshows@aol.com). Website: <http://www.gserr.com>.

## **New Job for Society Member Neil Bagaus**

Society Member Neil Bagaus has a new position with Iowa Pacific Holdings. He has been named the Operations Manager for the Hoosier State. This is an Amtrak Train that Iowa Pacific will be operating in conjunction with Amtrak. Amtrak will provide the engineer and conductor. Iowa Pacific will provide the cars and on board crew. Train will have a full dome and two coaches to start with. You will be able to eat under the glass of a dome with food prepared on the train. It runs between Chicago and Indianapolis. Below are a couple of photos of the power for the Hoosier State.



+++++

### **Aiken RY CO. Locomotive 4202**



*Photo courtesy of Society Supporter Al Langley. The Aiken Railway Company operates 19 miles of line in Aiken County, SC.*

# LIST OF OFFICE CARS AND EQUIPMENT AT AUGUSTA, GA FOR 2015 MASTERS GOLF TOURNAMENT, APRIL 2015.

By Al Langley  
April 8, 2015

## EQUIPMENT AT NORFOLK SOUTHERN TAYLOR STREET OFFICE CAR TRACKS:

### BURLINGTON NORTHERN SANTA FE:

BNSF 8144, motive power (ES44C4)  
BNSF 52, 800665, "Mt. BAKER", power car  
BNSF 68, 800664, "ROLLINS PASS", sleeper (ex-ATSF 4-4-2 "Regal" sleeper)  
BNSF 67, 800667, "TRINCHERA PASS", sleeper (ex-ATSF 4-4-2 "Regal" sleeper)  
BNSF 65, 800662, "RATON PASS", sleeper (ex-ATSF 4-4-2 "Regal" sleeper)  
BNSF 6, 800648, "TOPEKA", diner  
BNSF 1, 800294, "GERALD GRINSTEIN", office car  
(BNSF motive power in orange and green livery. Cars all stainless steel.)

### NORFOLK SOUTHERN:

NS 4271, Executive F-9A, motive power  
NS 4275, Executive F-7B, motive power  
NS 4276, Executive F-7B, motive power  
NS 39, power car (NW heritage)  
NS 4, 800356, "MICHIGAN", office car (Conrail heritage)  
NS 13, 800784, "GEORGIA", sleeper (SOU heritage)  
NS 20, 800774, "OHIO", office car, (NW heritage)  
NS 3, 800771, "CLAYTOR LAKE", office car (NW heritage)  
NS 5, 800221, "MARYLAND", office car (Conrail heritage)  
NS 7, "PENNSYLVANIA", office car (Conrail heritage)  
NS 12, 800772, "INDIANA", sleeper (NW heritage)  
NS 9, 800769, "ALABAMA", sleeper (SOU heritage)  
NS 11, 800782, "ILLINOIS", sleeper (SOU heritage)  
NS 24, 800777, "DELAWARE", full length dome-lounge (Conrail heritage)  
NS 21, 800775, "WEST VIRGINIA", diner (SOU heritage)  
NS 18, 800783, "NEW ORLEANS", diner (SOU heritage)  
NS 19, 800773, "KENTUCKY", diner (NW heritage)  
NS 23, 800776, "BUENA VISTA", theater/track inspection car (SOU heritage)  
NS 1, 800770, "VIRGINIA", office car (SOU heritage)  
NS 2, 800773, "CAROLINA", sleeper (SOU heritage){Note NS1 and NS2 twin unit set}  
RPCX 800321, "SANDY CREEK", round-nose observation (NYC - 20th Century Ltd.) (Privately owned by NS CEO, Mr. Wick Moorman, painted in NS livery.)  
(NS motive power in tuxedo black and white, Cars in NW Tuscan red, black roofs and trucks and gold lettering.)

## EQUIPMENT AT CSXT JORDAN ROAD OFFICE CAR TRACK:

CSXT 9998, Executive F40PH-2, motive power  
CSXT 9999, Executive F40PH-2, motive power  
CSXT 994350, "ILLINOIS", sleeper  
CSXT 994363, "KENTUCKY", sleeper  
CSXT 994317, "BALTIMORE", office car  
CSXT 994300, "NORTH CAROLINA", office car  
CSXT 994307, "WAYCROSS", office car  
CSXT 994525, "TENNESSEE", sleeper  
CSXT 994012, "MICHIGAN", sleeper  
CSXT 994010, "NEW YORK", office car  
CSXT 994319, "GREENBRIER", diner  
CSXT 994315, "INDIANA", sleeper  
CSXT 994008, "MISSISSIPPI", sleeper  
CSXT 994310, "WEST VIRGINIA", baggage-storage with railed open platform  
(CSXT motive power in blue & yellow livery. CSXT cars in blue and gray livery.)

**Central Florida Railway Historical Society, Inc.**  
**Combined Board & Regular Meeting Minutes**  
Central Florida RR Museum  
April 13, 2015  
7:00 PM

**Call to Order:** President Dusenbury called the meeting to order at 7:00 PM. Board members present were: Bill Dusenbury, Jerry Honetor, Irv Lipscomb, Phil Piet, David Rhea, Frank Milmore, Ken Murdock and Phil Cross.

**Meeting Prayer and Pledge of Allegiance:** David Rhea led the meeting attendees in the meeting prayer and the pledge of allegiance.

**Recognition of Visitors:** President Dusenbury acknowledged there were no visitors in attendance.

**Recognition of Members/Friends Concerns:** Phil Cross reported Clayton Bishop is now in a Rehab Center in Eustis; Phil Cross reported Dwight Stoffel is having eyesight problems and is no longer able to drive at night; Ken Murdock reported that Warren McFarland is recovering from a recent medical issue; Jarrod Reynolds reported that both of his grandparents are improving, but prayers would still be appreciated; Frank Milmore reported that his brother-in-law continues to battle cancer.

**Approval of the March 9, 2015 Combined Board & Regular Meeting Minutes:** Motion by Irv Lipscomb and second by Jerry Honetor to approve the minutes as printed in the Flatwheel. The vote was unanimous.

**March 2015 Treasurer's Report:** David Rhea and Frank Milmore presented the Treasurer's report for March 2015 and declared the Society solvent. Motion by Phil Cross and second by Ken Murdock to transfer \$2,000.00 from the checking account to the building fund. The vote was unanimous.

**Vice President of Membership & Programs Report:** Jerry Honetor presented the membership report for March 2015.

- **Membership Report**
  - \* Currently 72 Members
  - \* 50 Members have renewed for 2015
  - \* 3 new members for 2015
  - \* 19 members have not renewed for 2015
- **Society Events for 2015:** Hosting the Annual Meeting of the Florida Chapter of the Morse Telegraph Club (and celebration of Samuel Morse's birthday) on April 25<sup>th</sup> at the CFRR Museum. Jerry Honetor announced that this event had been cancelled at the request of the Florida Chapter of the Morse Telegraph Club due to a recent decline in membership in the organization and several of the members are no longer able to make the trip from their homes to the RR Museum for the event.
- **Field Trips Suggested/Planned for 2015**
  - \* Gold Coast Railroad Museum in Miami, FL (Suggested)
  - \* St. Marys Railroad in St. Marys, GA (Suggested)
  - \* 253 Steam Association Museum in Ft. Pierce, FL (Suggested)
- **Programs & Refreshments Hosts for 2015:**
  - \* Programs are needed for July through October, and December 2015. Jarrod Reynolds advised that he may not be available to give his scheduled program in June. President Dusenbury advised Danny Harmon is willing to come and give a program. A date and program title will be selected soon. Frank Milmore will provide a program later this year. A date and program title will be selected soon.
  - \* Refreshments Hosts are needed for September and October 2015. There were no takers for September and October.

**Museum Curator Report – Ken Murdock**

- **CFRR Museum Report** – 1,050 visitors for February and 1,009 visitors for March; 2,885 visitors for 2015 to date. 306.25 volunteer hours donated by the membership during February; 316.75 volunteer hours donated by the membership during March; 861.75 hours donated for 2015 to date. The Society now has enough LED lights to work over all of the showcases. There is no UV and the heat is greatly reduced. Al Sharp and Ken Murdock have been the mainstays in the conversion project.
- **Library Update:** Jerry Honetor reported that the Richard Taylor donation contained a total of 1,215 items, broken down as follows: 354 RR books, 43 RR DVDs, 37 RR Magazines, 7 RR TTs, 71 RR VHS Tapes. 449 model RR items. 21 railroiana items and 233+ non-RR items.
- **Technology Update:** There was no update from the Technology Committee.
- **Recent Acquisitions & Donations:** There were no recent donations to report.
- **Expansion Plans for the Central Florida Railroad Museum.** Ken Murdock advised that the Society is waiting on architectural drawings to present to the Winter Garden Heritage Foundation and the City's Architectural Review Board.
- **The Next Museum Work Session:** The next work session is scheduled for April 25<sup>th</sup>, beginning at 8:30 AM.

Museum Host Schedule for May 2015 – Irv Lipscomb solicited volunteers for the Saturdays and Sundays in May.

**President's Report – Bill Dusenbury**

- **Winter Garden Heritage Foundation Board of Directors Activities for March 2015:** Working on plans for the annual golf tournament scheduled for May 11<sup>th</sup>.
- **CFRHS Facebook Page Update:** Bill Dusenbury reported that there had not been and progress lately on the Society's Facebook Page.



- **Spring Fever in the Garden Report:** Phil Cross reported that the Museum was open eight hours on Saturday and five hours on Sunday. Society members Ginger Honeter, Lloyd & Sylvia Brown, and Phil Cross manned the Museum on Saturday; Society members Ken Murdock, Jerry Honeter, Irv Lipscomb, Frank Milmore and David Rhea assisted with the TE&G train ride between Winter Garden and Ocoee on Saturday. Society members Ginger Honeter and Phil Cross manned the Museum on Sunday; Society members Jerry Honeter, Les Westlake and David Rhea assisted with the TE&G train ride between Winter Garden and Ocoee on Sunday. The Tavares, Eustis & Gulf Railroad operated the Orange Blossom Cannonball out of Winter Garden to Ocoee and back both days. Six trips were operated on Saturday and two were operated on Sunday. The Orange Lego Users Group (Orange LUG) set up and manned the large Lego display of downtown Winter Garden in the Museum Meeting Room both days. Two members manned the display on Saturday and two members manned the display on Sunday.

**FCRR, FMRR, FNRR & SunRail Update:** Bill Dusenbury reported that the FNRR is currently receiving rock trains into Ocala for Anderson Columbia. Nothing new to report on the FCRR, FMRR or SunRail.

**Tourist Train Operations on the Florida Central RR:** Bill Dusenbury reported the TE&G RR was in Winter Garden this past weekend for Spring Fever in the Garden. They will be participating in the Trains, Planes and BBQ event in Tavares this coming weekend.

**Items from the Board of Directors:** Bill Dusenbury reported that the FCRR has recently donated 2 crossties and a brake assembly to the Museum. Ken Murdock reported that there is a new principal at Lakeville Elementary and the Society needs to meet with her before the end of the current school year to discuss plans for the continuing the railroad memorabilia display at the school.

**Items from the Membership:** Mike Ryan reported that Neil Bagaus is working on getting the Easter Flyer up and operating 2 trips a day between Tulsa and Oklahoma City. Ed Ellis is also working on acquiring 2 more short lines in USA.

**Tonight's Program:** Classic Florida Rails DVD By Irv Lipscomb

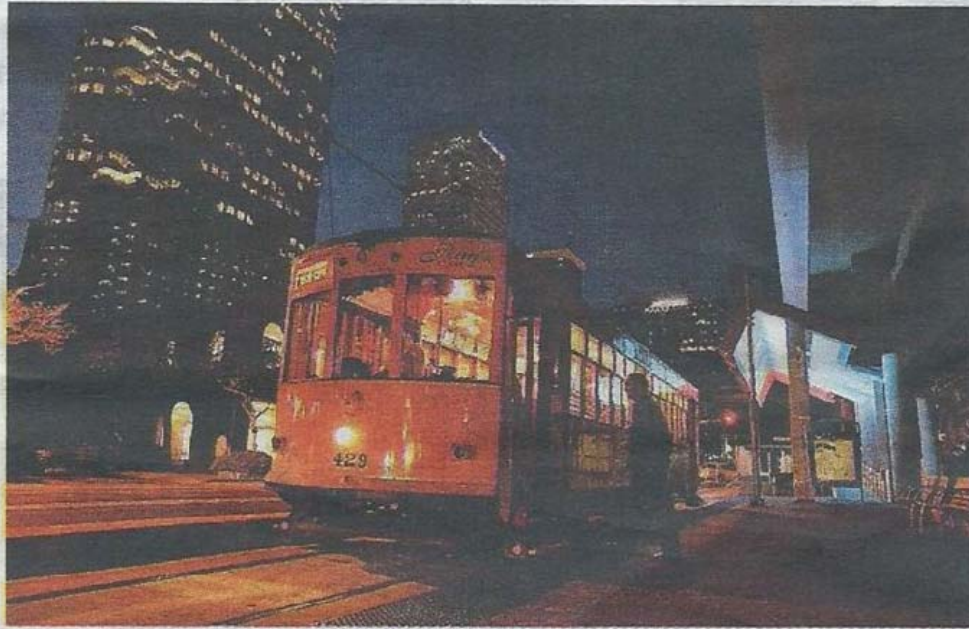
**Tonight's Refreshments Provided By:** Mike Ryan

**Meeting Adjournment:** President Dusenbury adjourned the meeting at 8:00 PM.

+++++



The story is told that in the 1960s, when the ACL had just installed its first computerized car tracking system, that when officials would show off this new system, they would ask visitors to enter ACL 1504 and ask the computer for its location. The computer was programmed to respond by printing out "Look out the window, dummy!" Story and photograph courtesy of Society Member Warren McFarland.



tbt\* files (2011)

**The streetcar now runs a 2.7-mile route from downtown Tampa to Ybor.**

# State puts up \$1M for streetcar future study

By **Richard Danielson**  
rdanielson@tampabay.com

The Florida Department of Transportation has committed \$1 million to help City Hall figure out how to expand Tampa's underused and underfunded downtown streetcar.

Mayor Bob Buckhorn has been vocal about the streetcar's problems. "We can maintain the status quo for a while," he said in a recent interview. "The larger issue is, what do we do with it? What are the future expansion plans? What's the route? How do you pay for it?"

Those questions have gained urgency because of Tampa Bay Lightning owner Jeff Vinik's \$1 billion planned redevelopment around Amalie Arena. Vinik's development team has been working with the city on potential changes to the streetcar in the hope of seeing an expanded trolley line move workers, sports fans and residents around downtown.

Vinik's plans elevate the streetcar's potential and create what Buckhorn

calls "a rare economic opportunity."

FDOT agrees.

"We share your viewpoint that a strategic streetcar extension has the potential of being a viable transportation option to support the continuing growth within Tampa's urban core," FDOT District 7 Secretary Paul Steinman said in a letter delivered last week.

Buckhorn said the city will put in \$250,000 for a jointly funded feasibility study. The study will consider extending the streetcar's route potentially north to Tampa Heights. "The route is critical," Buckhorn said. "The route will dictate what the cost is."

The engineering firm HDR has estimated the costs of expanding the streetcar at \$30 million to \$60 million. That does not include \$2.5 million for needed capital maintenance or another \$60 million that would be needed to modernize the streetcar.

In the future, Buckhorn anticipates that the city could request state funds to help with the project's capital and operating costs.

*Tampa streetcar article courtesy of Society Member Roger Wilson.*



## 2015 CFRHS Membership Statistics

Society Members	33
Society Century Members	13
Ward Britt	
Phil Cross	
Ann Cross	
Bill Dusenbury	
Chuck Hanus	
Andy Healy	
Jerry Honetor	
Clarence Hurt	
Clem Kruse	
Frank Milmore	
Ken Murdock	
Al Sharp	
Jim Shoemaker	
Society Friends	11
Society Family Members	15
Society Student Members	0
<b>Total Members</b>	<b>72</b>

## May 2015 Museum Work Session Saturday, May 30, 2015

**8:30 AM to 3:30 PM**

**Please come out and help  
with the many chores that  
need to be done!!!!**

**The Flatwheel** is the official monthly publication of the Central Florida Railway Historical Society. Opinions and views expressed in this publication are those of the editor and contributors and do not necessarily reflect those of the members, officers or directors of the Society.

Material for the Flatwheel (including exchange newsletters) should be sent to the editor via e-mail at:

[editor@cfrhs.org](mailto:editor@cfrhs.org) .

**Please Note:** Material from The Flatwheel may be reprinted in other publications provided credit is given as to the source.

**The Central Florida Railroad Museum** is located at 101 South Boyd Street, Winter Garden, FL, 34787 (downtown Winter Garden, immediately north of the water tower).

The Museum is open daily from 1:00 PM to 5:00 PM (excluding selected holidays) or by special arrangements. Large groups are encouraged to contact the Museum at 407-656-0559 to arrange for their tour in advance.

The Central Florida Railroad Museum is operated under a cooperative agreement between the City of Winter Garden, the Winter Garden Heritage Foundation and the Central Florida Railway Historical Society, Inc..

**The Central Florida Railway Historical Society, Inc.** meets on the 2<sup>nd</sup> Monday of each month at 7:00 PM at the **Central Florida Railroad Museum**. The Museum is located at 101 South Boyd Street in downtown Winter Garden immediately north of the water tower. Guests and visitors are welcome and encouraged to attend.

All correspondence and other materials for the Society should be mailed to:

Central Florida Railway Historical Society, Inc.

PO Box 770567

Winter Garden, FL 34777-0567

Or e-mailed to the Society at: [info@cfrhs.org](mailto:info@cfrhs.org)

Web page: [www.cfrhs.org](http://www.cfrhs.org)

**Mission:** The mission of the Central Florida Railway Historical Society, Inc. is: Promoting railway heritage and preservation and educating members and the public about rail transportation, its history and impact, with a focus on Central Florida.

**Purpose:** The purpose for which this Society is formed and the business or objects to be carried on and promoted by it are mainly historical, educational and not-for-profit. The more particular objects are:

- Preserve the historical materials of rail transportation of all kinds and issue publications relative to the subject.
- Acquire by donation, purchase, lease or otherwise, real or personal property, and to maintain, sell, lease, deed or otherwise manage in a manner appropriate for the Central Florida Railroad Museum and the above mentioned purposes.
- Plan and run a series of programs and events for Society members' education and participation.
- Work and support the activities of the Winter Garden Heritage Foundation. Assist in any and all group projects which benefit the goals and activities of the Society and the Winter Garden Heritage Foundation.

President: Bill Dusenbury

[president@cfrhs.org](mailto:president@cfrhs.org)

407-509-1521

Vice President - Membership & Programs: Jerry Honetor

[vpmembership@cfrhs.org](mailto:vpmembership@cfrhs.org)

407-957-8788

Vice President - Education & Public Relations: Irv Lipscomb

[vpeducation@cfrhs.org](mailto:vpeducation@cfrhs.org)

407-895-4749

Secretary: Joe Lehmann, Jr.

[secretary@cfrhs.org](mailto:secretary@cfrhs.org)

856-912-8628

Assistant Secretary: Phil Piet

[asstsecretary@cfrhs.org](mailto:asstsecretary@cfrhs.org)

407-656-4960

Treasurer: David Rhea

[treasurer@cfrhs.org](mailto:treasurer@cfrhs.org)

407-656-8749

Assistant Treasurer: Frank Milmore

[assttreasurer@cfrhs.org](mailto:assttreasurer@cfrhs.org)

407-366-8941

Museum Curator: Ken Murdock

[curator@cfrhs.org](mailto:curator@cfrhs.org)

407-277-5719

Assistant Museum Curator: Roger Wilson

[asstcurator@cfrhs.org](mailto:asstcurator@cfrhs.org)

352-314-0881

Historian: Phil Cross

[historian@cfrhs.org](mailto:historian@cfrhs.org)

407-509-4572

Immediate Past President: Phil Cross

[pastpresident@cfrhs.org](mailto:pastpresident@cfrhs.org)

407-509-4572

Flatwheel Editor: Phil Cross

[editor@cfrhs.org](mailto:editor@cfrhs.org)

407-509-4572

Webmaster: Joseph Lehmann, Jr.

[webmaster@cfrhs.org](mailto:webmaster@cfrhs.org)

856-912-8628